



## Collegamenti equipotenziali Equipotential bonding

### ISOLATORI PORTASBARRE BAR INSULATORS



Gli isolatori portasbarre sono costruiti in massa poliestere con una percentuale di fibra di vetro del 18/20%.

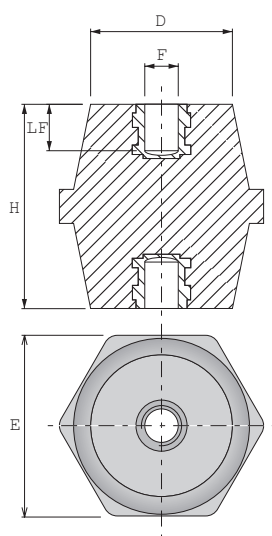
La colorazione standard è rosso RAL 3002, fornibili anche in altri colori e con caratteristiche antiacido (minimi ordinabili da definire).

Gli inserti metallici femmina, incorporati alle estremità, sono rispondenti alla Normativa RoHS.

*Bar insulators are made up by polyester with 18/20% of glass fibre.*

*The standard colour is red RAL 3002, available even with other colours and with anti-acid characteristics (min. order to establish).*

*Female metallic inserts, included inside the endings, are in compliance with RoHS regulations.*

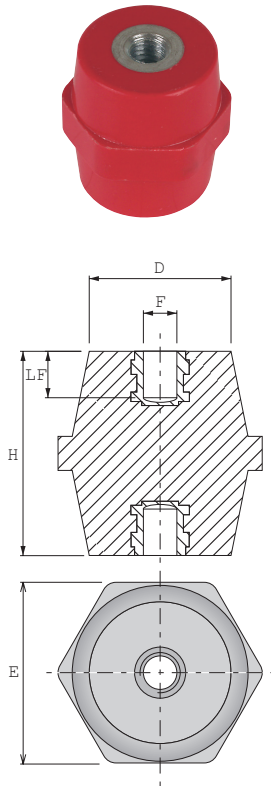


CODICE CODE	E (mm)	H (mm)	F	LF (mm)	D (mm)	CONF/PZ BOX/PCS
03.06.20.20.0000001	10 x 12		M3		10	100
03.06.20.20.0000002	15 x 16		M4	4	12	100
03.06.20.20.0000003	15 x 16		M5	4	12	100
03.06.20.20.0000004	19 x 20		M4	6	15	100
03.06.20.20.0000005	19 x 20		M5	6	15	100
03.06.20.20.0000006	19 x 20		M6	6	15	100
03.06.20.20.0000007	22 x 25		M4	6	18	100
03.06.20.20.0000008	22 x 25		M5	6	18	100
03.06.20.20.0000009	22 x 25		M6	6	18	100
03.06.20.20.0000010	30 x 30		M6	9	26	100
03.06.20.20.0000011	30 x 30		M8	9	26	100
03.06.20.20.0000012	30 x 31		M8	9	26	100
03.06.20.20.0000013	32 x 35		M6	10	29	120
03.06.20.20.0000014	32 x 35		M8	10	29	120
03.06.20.20.0000015	32 x 35		M10	10	29	120
03.06.20.20.0000016	41 x 40		M6	10	34	60
03.06.20.20.0000017	41 x 40		M8	10	34	60
03.06.20.20.0000018	41 x 40		M10	10	34	60
03.06.20.20.0000019	41 x 40		M12	10	34	60
03.06.20.20.0000020	36 x 50		M6	13	30	75
03.06.20.20.0000021	36 x 50		M8	13	30	75
03.06.20.20.0000022	36 x 50		M10	15	30	75
03.06.20.20.0000023	41 x 65		M8	15	32	75
03.06.20.20.0000024	41 x 65		M10	18	32	36
03.06.20.20.0000025	41 x 65		M12	18	32	36
03.06.20.20.0000026	50 x 75		M8	18	38	24
03.06.20.20.0000027	50 x 75		M10	18	38	24
03.06.20.20.0000028	50 x 75		M12	18	38	24
03.06.20.20.0000029	65 x 100		M10	18	52	9
03.06.20.20.0000030	65 x 100		M12	18	52	9
03.06.20.20.0000031	65 x 100		M16	24	52	9
03.06.20.20.0000032	41 x 35		M6	10	35	80
03.06.20.20.0000033	41 x 35		M8	10	35	80
03.06.20.20.0000034	41 x 35		M10	10	35	80
03.06.20.20.0000035	46 x 40		M8	10	40	48
03.06.20.20.0000036	46 x 40		M10	10	40	48
03.06.20.20.0000037	46 x 40		M12	10	40	48
03.06.20.20.0000038	46 x 45		M8	13	38	48
03.06.20.20.0000039	46 x 45		M10	13	38	48
03.06.20.20.0000040	46 x 45		M12	13	38	48
03.06.20.20.0000041	50 x 50		M8	13	40	36
03.06.20.20.0000042	50 x 50		M10	13	40	36
03.06.20.20.0000043	50 x 50		M12	13	40	36
03.06.20.20.0000044	55 x 60		M8	15	43	24



## Collegamenti equipotenziali Equipotential bonding

### ISOLATORI PORTASBARRE BAR INSULATORS



CODICE CODE	E	H	F	LF	D	CONF./PZ BOX/PCS
	(mm)	(mm)		(mm)	(mm)	
03.06.20.20.00000045	55 x 60		M10	18	43	24
03.06.20.20.00000046	55 x 60		M12	18	43	24
03.06.20.20.00000047	60 x 70		M8	18	48	15
03.06.20.20.00000048	60 x 70		M10	18	48	15
03.06.20.20.00000049	60 x 70		M12	18	48	15
03.06.20.20.00000050	60 x 70		M16	24	48	15
03.06.20.20.00000051	65 x 80		M10	18	52	12
03.06.20.20.00000052	65 x 80		M12	18	52	12
03.06.20.20.00000053	65 x 80		M16	24	52	12
03.06.20.20.00000054	15 x 16		M4	4	10	50
03.06.20.20.00000055	15 x 16		M4		40	50
03.06.20.20.00000056	15 x 16		M5	6	10	50
03.06.20.20.00000057	15 x 16		M5		10	50
03.06.20.20.00000058	22 x 25		M5	6	10	50
03.06.20.20.00000059	22 x 25		M5		10	50
03.06.20.20.00000060	22 x 25		M6	6	15	50
03.06.20.20.00000061	22 x 25		M6		15	50
03.06.20.20.00000062	32 x 35		M8	10	15	60
03.06.20.20.00000063	32 x 35		M8		15	60
03.06.20.20.00000064	32 x 35		M10	10	25	60
03.06.20.20.00000065	32 x 35		M10		25	60
03.06.20.20.00000066	36 x 50		M8	13	25	36
03.06.20.20.00000067	36 x 50		M8		25	36
03.06.20.20.00000068	36 x 50		M10	15	25	36
03.06.20.20.00000069	36 x 50		M10		25	36