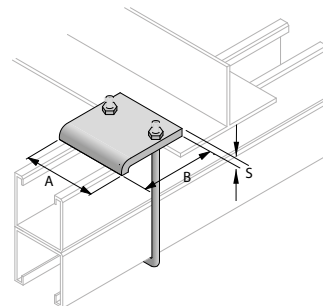


BEAM CLAMP FOR SIMPLE PROFILE						
CODE			DIMENSIONS (mm)		THICKNESS (mm)	WEIGHT (Kg/pcs)
GROUP	MATERIAL	TYPE	A	B		
AC	ZC	BC 041 021 0000000	~ 80	55	6	0,39
AC	ZC	BC 041 041 0000000	~ 80	55	6	0,39

MATERIALS	
ZC	HDG
04	STAINLESS STEEL AISI 304L
16	STAINLESS STEEL AISI 316L

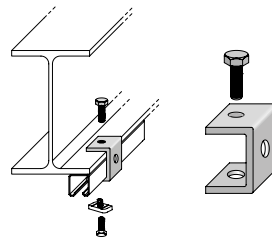
Suitable for beams with max thickness 20mm. Complete with U bolt



BEAM CLAMP FOR DOUBLE PROFILE						
CODE			DIMENSIONS (mm)		THICKNESS (mm)	WEIGHT (Kg/pcs)
GROUP	MATERIAL	TYPE	A	B		
AC	ZC	BCD 041 082 0000 00	~ 80	55	6	0,42
AC	ZC	BCD 041 042 0000 00	~ 80	55	6	0,42

MATERIALS	
ZC	HDG
04	STAINLESS STEEL AISI 304L
16	STAINLESS STEEL AISI 316L

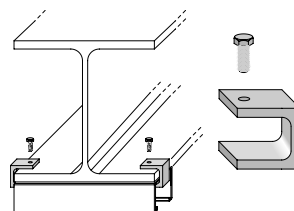
Suitable for beams with max thickness 20mm. Complete with U bolt



CLAMP FOR PROFILE FASTENING TO BEAM				
CODE			THICKNESS (mm)	WEIGHT (Kg/pcs)
GROUP	MATERIAL	TYPE		
AC	ZC	ML M12 041 0000 00	6	0,43

MATERIALS	
ZC	HDG
04	STAINLESS STEEL AISI 304L
16	STAINLESS STEEL AISI 316L

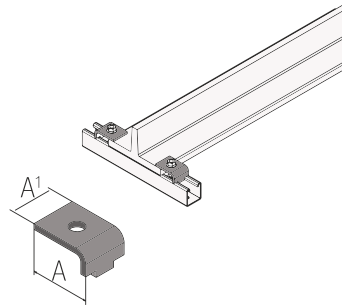
Suitable for beams with max thickness 20mm. Complete with n° 1 screw M12x40
It is recommended to use an anchor head nut with related screw in addition



CLAMP FOR PROFILE FASTENING TO BEAM				
CODE			THICKNESS (mm)	WEIGHT (Kg/pcs)
GROUP	MATERIAL	TYPE		
AC	ZC	MT M12 041 0000 00	6	0,21

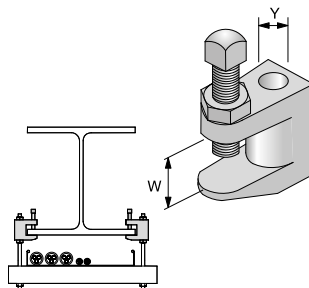
MATERIALS	
ZC	HDG
04	STAINLESS STEEL AISI 304L
16	STAINLESS STEEL AISI 316L

Suitable for beams with max thickness 20mm. Complete with n° 1 screw M12x40



CLAMP FOR PROFILE FASTENING TO BEAM						MATERIALS		
CODE			DIMENSIONS (mm)		THICKNESS (mm)	WEIGHT (Kg/pcs)	ZC	HDG
GROUP	MATERIAL	TYPE	A	A'			04	STAINLESS STEEL AISI 304L
AC	ZC	MLI 040 040 000000	54	40	6	0,21	16	STAINLESS STEEL AISI 316L

N° 1 anchor nut with related screw are necessary for profile fixing



Clamp suitable for the system's suspension to the flanges of steel beams, IPE, HEA or IPN type. It is supplied with the Y hole threaded and equipped with clamping bolt and locknut. Loads shown have a factor of safety of 4 at yielding.

Clamp material: zinc plated malleable cast iron.

Bolts material: screw class 8.8 steel, locknut class 8 steel zinc. plated

CAST IRON CLAMP BEAM FASTENING						MATERIALS			
CODE			W (mm)	Stud (Y)	TENSILE RESIST. (Nm)	CLAMPING TORQUE		GH	CAST IRON
GROUP	MATERIAL	TYPE				BOLT (Nm)	NUT (Nm)		
AC	GH	MC 0170M6 0000 00	17	M6	1,1	8	7,80		
AC	GH	MC 0170M8 0000 00	17	M8	1,1	8	9,16		
AC	GH	MC 019M10 0000 00	19	M10	2,4	8	10,50		
AC	GH	MC 023M12 0000 00	23	M12	3,1	8	11,85		
AC	GH	MC 028M12 0000 00	28	M12	3,1	8	13,20		