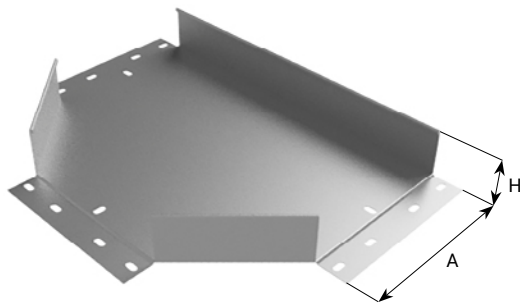
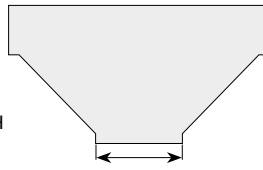


T derivations



*Reduced T derivation (DTR)



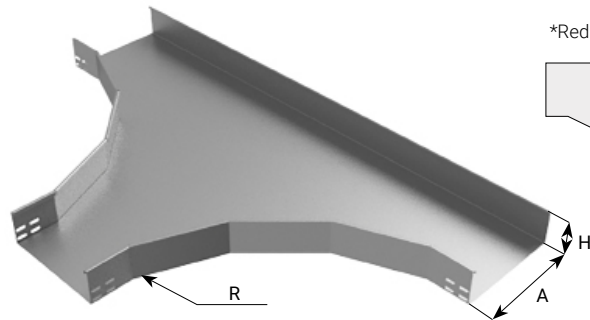
X = Variable if reduced T derivation

MATERIALS	
SE	ZINC COATING "SENDZIMIR"
ZC	HDG
04	STAINLESS STEEL AISI 304L
16	STAINLESS STEEL AISI 316L

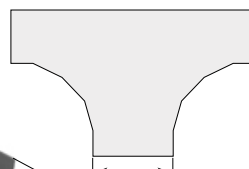


LATERAL T DERIVATIONS (AR-FC)								COVERS			
CODE			DIMENSIONS (mm)			THICKNESS (mm)	WEIGHT (Kg/mt)	CODE	DIMENSIONS (mm)	THICKNESS (mm)	WEIGHT (Kg/pcs)
GROUP	MATERIAL	TYPE	A	H	R						
AR	ZC	DTP	50	50	150	1,5	1,20	CA ZC DTP	50	1	0,40
AR	ZC	DTP	75	50	150	1,5	1,40	CA ZC DTP	75	1	0,60
AR	ZC	DTP	75	75	150	1,5	1,50	CA ZC DTP	75	1	0,60
AR	ZC	DTP	100	50	150	1,5	1,50	CA ZC DTP	100	1	0,65
AR	ZC	DTP	100	75	150	1,5	1,70	CA ZC DTP	100	1	0,65
AR	ZC	DTP	100	100	150	1,5	1,80	CA ZC DTP	100	1	0,65
AR	ZC	DTP	150	50	150	1,5	1,75	CA ZC DTP	150	1	0,70
AR	ZC	DTP	150	75	150	1,5	1,90	CA ZC DTP	150	1	0,70
AR	ZC	DTP	150	100	150	1,5	2,05	CA ZC DTP	150	1	0,70
AR	ZC	DTP	200	50	150	1,5	2,00	CA ZC DTP	200	1	0,80
AR	ZC	DTP	200	75	150	1,5	2,14	CA ZC DTP	200	1	0,80
AR	ZC	DTP	200	100	150	1,5	2,30	CA ZC DTP	200	1	0,80
AR	ZC	DTP	300	50	150	1,5	2,46	CA ZC DTP	300	1	1,00
AR	ZC	DTP	300	75	150	1,5	2,60	CA ZC DTP	300	1	1,00
AR	ZC	DTP	300	100	150	1,5	2,75	CA ZC DTP	300	1	1,00
AR	ZC	DTP	400	75	150	1,5	3,10	CA ZC DTP	400	1	1,20
AR	ZC	DTP	400	100	150	1,5	3,22	CA ZC DTP	400	1	1,20
AR	ZC	DTP	500	75	150	1,5	3,50	CA ZC DTP	500	1	1,40
AR	ZC	DTP	500	100	150	1,5	3,70	CA ZC DTP	500	1	1,40
AR	ZC	DTP	600	75	150	1,5	4,00	CA ZC DTP	600	1	1,60
AR	ZC	DTP	600	100	150	1,5	4,20	CA ZC DTP	600	1	1,60

Other dimensions and thickness are on request. Also available reduced T derivation (DTR)*



*Reduced T derivation (DTR)



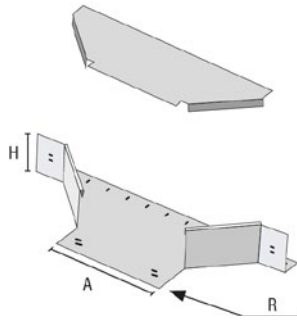
X = Variable if reduced T derivation

MATERIALS	
SE	ZINC COATING "SENDZIMIR"
ZC	HDG
04	STAINLESS STEEL AISI 304L
16	STAINLESS STEEL AISI 316L



LATERAL T DERIVATIONS (AR-FC)								COVERS			
CODE			DIMENSIONS (mm)			THICKNESS (mm)	WEIGHT (Kg/mt)	CODE	DIMENSIONS (mm)	THICKNESS (mm)	WEIGHT (Kg/pcs)
GROUP	MATERIAL	TYPE	A	H	R						
FC	ZC	DTP	50	50	600	1,5	5,60	CA ZC DTP	50	1	2,70
FC	ZC	DTP	75	50	600	1,5	5,90	CA ZC DTP	75	1	2,80
FC	ZC	DTP	75	75	600	1,5	6,50	CA ZC DTP	75	1	2,80
FC	ZC	DTP	100	50	600	1,5	6,10	CA ZC DTP	100	1	3,00
FC	ZC	DTP	100	75	600	1,5	6,70	CA ZC DTP	100	1	3,00
FC	ZC	DTP	100	100	600	1,5	7,30	CA ZC DTP	100	1	3,00
FC	ZC	DTP	150	50	600	1,5	6,60	CA ZC DTP	150	1	3,30
FC	ZC	DTP	150	75	600	1,5	7,20	CA ZC DTP	150	1	3,30
FC	ZC	DTP	150	100	600	1,5	7,80	CA ZC DTP	150	1	3,30
FC	ZC	DTP	200	50	600	1,5	7,00	CA ZC DTP	200	1	3,60
FC	ZC	DTP	200	75	600	1,5	7,70	CA ZC DTP	200	1	3,60
FC	ZC	DTP	200	100	600	1,5	8,30	CA ZC DTP	200	1	3,60
FC	ZC	DTP	300	50	600	1,5	8,00	CA ZC DTP	300	1	4,20
FC	ZC	DTP	300	75	600	1,5	8,60	CA ZC DTP	300	1	4,20
FC	ZC	DTP	300	100	600	1,5	9,20	CA ZC DTP	300	1	4,20
FC	ZC	DTP	400	75	600	1,5	9,50	CA ZC DTP	400	1	4,80
FC	ZC	DTP	400	100	600	1,5	10,20	CA ZC DTP	400	1	4,80
FC	ZC	DTP	500	75	600	1,5	10,50	CA ZC DTP	500	1	5,40
FC	ZC	DTP	500	100	600	1,5	11,10	CA ZC DTP	500	1	5,40
FC	ZC	DTP	600	75	600	1,5	11,40	CA ZC DTP	600	1	6,00
FC	ZC	DTP	600	100	600	1,5	12,60	CA ZC DTP	600	1	6,00

Other dimensions, thickness and bend radius 300 are on request. Also available reduced T derivation (DTR)*

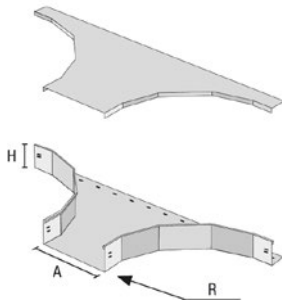


MATERIALS	
SE	ZINC COATING "SENDZIMIR"
ZC	HDG
04	STAINLESS STEEL AISI 304L
16	STAINLESS STEEL AISI 316L



LATERAL T DERIVATIONS (AR)								COVERS				
CODE			DIMENSIONS (mm)			THICKNESS (mm)	WEIGHT (Kg/m)	CODE	DIMENSIONS (mm)		THICKNESS (mm)	WEIGHT (Kg/pcs)
GROUP	MATERIAL	TYPE	A	H	R				GROUP	A		
AR	ZC	DTL	50	50	150	1,5	1,2	CA ZC DTL	50	1	0,4	
AR	ZC	DTL	75	50	150	1,5	1,4	CA ZC DTL	75	1	0,6	
AR	ZC	DTL	75	75	150	1,5	1,5	CA ZC DTL	75	1	0,6	
AR	ZC	DTL	100	50	150	1,5	1,5	CA ZC DTL	100	1	0,65	
AR	ZC	DTL	100	75	150	1,5	1,7	CA ZC DTL	100	1	0,65	
AR	ZC	DTL	100	100	150	1,5	1,8	CA ZC DTL	100	1	0,65	
AR	ZC	DTL	150	50	150	1,5	1,75	CA ZC DTL	150	1	0,7	
AR	ZC	DTL	150	75	150	1,5	1,9	CA ZC DTL	150	1	0,7	
AR	ZC	DTL	150	100	150	1,5	2,05	CA ZC DTL	150	1	0,7	
AR	ZC	DTL	200	50	150	1,5	2	CA ZC DTL	200	1	0,8	
AR	ZC	DTL	200	75	150	1,5	2,14	CA ZC DTL	200	1	0,8	
AR	ZC	DTL	200	100	150	1,5	2,3	CA ZC DTL	200	1	0,8	
AR	ZC	DTL	300	50	150	1,5	2,46	CA ZC DTL	300	1	1	
AR	ZC	DTL	300	75	150	1,5	2,6	CA ZC DTL	300	1	1	
AR	ZC	DTL	300	100	150	1,5	2,75	CA ZC DTL	300	1	1	
AR	ZC	DTL	400	75	150	1,5	3,1	CA ZC DTL	400	1	1,2	
AR	ZC	DTL	400	100	150	1,5	3,22	CA ZC DTL	400	1	1,2	
AR	ZC	DTL	500	75	150	1,5	3,5	CA ZC DTL	500	1	1,4	
AR	ZC	DTL	500	100	150	1,5	3,7	CA ZC DTL	500	1	1,4	
AR	ZC	DTL	600	75	150	1,5	4	CA ZC DTL	600	1	1,6	
AR	ZC	DTL	600	100	150	1,5	4,2	CA ZC DTL	600	1	1,6	

Other dimensions and thickness are on request. Viable as reduced T derivation.



MATERIALS	
SE	ZINC COATING "SENDZIMIR"
ZC	HDG
04	STAINLESS STEEL AISI 304L
16	STAINLESS STEEL AISI 316L



LATERAL T DERIVATIONS (AR-FC)								COVERS				
CODE			DIMENSIONS (mm)			THICKNESS (mm)	WEIGHT (Kg/m)	CODE	DIMENSIONS (mm)		THICKNESS (mm)	WEIGHT (Kg/pcs)
GROUP	MATERIAL	TYPE	A	H	R				GROUP	A		
FC	ZC	DTL	50	50	600	1,5	5,6	CA ZC DTL	50	1	2,7	
FC	ZC	DTL	75	50	600	1,5	5,9	CA ZC DTL	75	1	2,8	
FC	ZC	DTL	75	75	600	1,5	6,5	CA ZC DTL	75	1	2,8	
FC	ZC	DTL	100	50	600	1,5	6,1	CA ZC DTL	100	1	3	
FC	ZC	DTL	100	75	600	1,5	6,7	CA ZC DTL	100	1	3	
FC	ZC	DTL	100	100	600	1,5	7,3	CA ZC DTL	100	1	3	
FC	ZC	DTL	150	50	600	1,5	6,6	CA ZC DTL	150	1	3,3	
FC	ZC	DTL	150	75	600	1,5	7,2	CA ZC DTL	150	1	3,3	
FC	ZC	DTL	150	100	600	1,5	7,8	CA ZC DTL	150	1	3,3	
FC	ZC	DTL	200	50	600	1,5	7	CA ZC DTL	200	1	3,6	
FC	ZC	DTL	200	75	600	1,5	7,7	CA ZC DTL	200	1	3,6	
FC	ZC	DTL	200	100	600	1,5	8,3	CA ZC DTL	200	1	3,6	
FC	ZC	DTL	300	50	600	1,5	8	CA ZC DTL	300	1	4,2	
FC	ZC	DTL	300	75	600	1,5	8,6	CA ZC DTL	300	1	4,2	
FC	ZC	DTL	300	100	600	1,5	9,2	CA ZC DTL	300	1	4,2	
FC	ZC	DTL	400	75	600	1,5	9,5	CA ZC DTL	400	1	4,8	
FC	ZC	DTL	400	100	600	1,5	10,2	CA ZC DTL	400	1	4,8	
FC	ZC	DTL	500	75	600	1,5	10,5	CA ZC DTL	500	1	5,4	
FC	ZC	DTL	500	100	600	1,5	11,1	CA ZC DTL	500	1	5,4	
FC	ZC	DTL	600	75	600	1,5	11,4	CA ZC DTL	600	1	6	
FC	ZC	DTL	600	100	600	1,5	12,6	CA ZC DTL	600	1	6	

Other dimensions, thickness and bend radius 300 are on request